

OHCO™

Massage Redefined™

R.6

The Magic of OHCO

A pleasant interjection. A subtle exclamation.
A word that demonstrates a peaceful emotion.

OHCO is a feeling created from the wisdom of a shiatsu master, the talent of a visionary designer and unprecedented massage technology. These elements give OHCO the ability to transform the ancient art of massage into a luxuriously timeless experience.

With thoughtful direction, the OHCO R.6 transports you to a state of deep relaxation and renewal. Calculated, precise movements mirror the hands of a shiatsu master—melting tension and awakening your senses.

Envelop yourself in complete serenity as the unexpected becomes a part of your everyday.



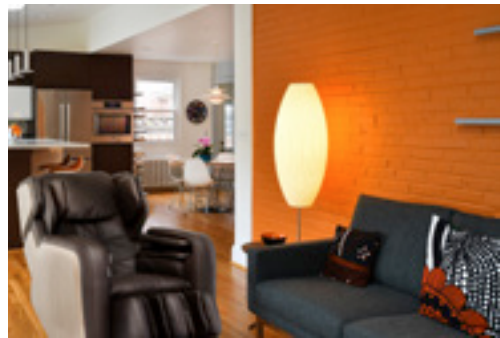


The Yin and Yang of Mid-Century Design

What gives the R.6 its unique character? Its elegant design blends into the most luxurious environment while its “Making the Best Better” DNA ensures the highest levels of experiential luxury. The R.6 was imagined as a Mid-Century Modern statement piece designed to integrate perfectly in any well-appointed living space. As a massage chair, it is discreet—and yet as a room fixture it demands to be put on display. It is a technological marvel and at

the same time celebrates natural finishes and simplicity of design. And like all OHCO creations, its therapeutic benefits have been orchestrated by a shiatsu master with the physical articulations to free you from the anxiety and mental stress of the day-to-day—quieting your body, clearing your mind and loosening your muscles. Clearly the R.6 values function as much as form.





Stillness Amidst Motion

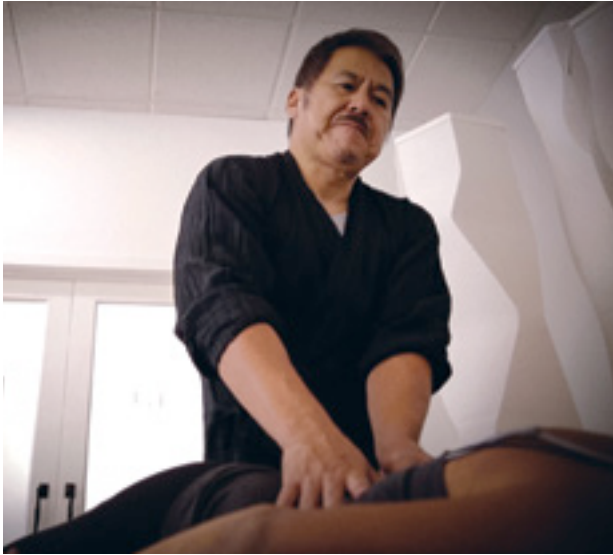
Known for his bullet trains that eclipse 200mph as well as designing the most exclusive Ferrari ever sold, Ken Okuyama has built a reputation for speed. Yet to fully understand speed, one must also understand stillness, and it is in stillness where Ken finds renewal.

The R.6 contains tranquility in the midst of dynamic engineering. His synergistic approach balances speed and stillness, sophistication and technology, and in the all-new R.6, beauty within and without.

**"You have to design the whole environment.
Without that the story doesn't carry through."**

Ken Okuyama

A handwritten signature in black ink, appearing to read 'Okuyama Ken', with a stylized flourish underneath.



Put Yourself in the Hands of a Master

Renowned shiatsu master, Okabayashi sensei begins his therapeutic sessions with a single, simple touch. Without clients saying a word, he discerns their emotions, feels the muscle stiffness and begins to bring the body back into harmony. It is this intuition that Okabayashi sensei brings to the OHCO symphony of movement. Under his direction, OHCO engineers have created an unsurpassed orchestration of touch that brings your whole person into harmony, unleashes the body's self-healing power and rejuvenates both mind and muscle.

“Creating equal, supportive pressure along the energy meridians of the body releases one into a state of emotional relaxation and brings harmony to both the body and mind.”

Akira Okabayashi



The Ethos of Japanese Engineering

In Japan, a standard of excellence is not a fixed point, but a tireless search for improvement. It is an attention to detail, a spirit that never stops striving and the reason that the R.6 has been created by a Japanese design master and choreographed by a Japanese shiatsu master.

Key Features

DeltaWave™

At the core of the R.6 lies the technology to transform your entire state of being. Our proprietary DeltaWave engine is designed to deliver an intuitive and life-like massage. In addition to basic movements, the DeltaWave 4D engine uses advanced massage algorithms to mimic the hand movements of a massage therapist.

Automatic Recline and Zero Gravity

As your experience begins, the R.6 automatically reclines as far back as 157° to distribute even pressure with each soothing massage movement. The R.6 also offers a zero gravity recline that cradles your body for maximum comfort while improving circulation, increasing lung capacity and gently decompressing the lumbar spine.

L-Track

Imprinted with the wisdom of Okabayashi sensei, the L-Track system mimics the unique shape of your body and releases tension throughout your entire back—beginning at your neck and moving down to your lumbar spine and glutes. Rest, rejuvenate and feel restored as increased blood flow delivers healing and mobility to your upper, mid and lower back.

Back AutoScan

Like a shiatsu master examining the curvature of your spine, the Back AutoScan reads your body structure and selects the appropriate shiatsu points for your neck, back and glutes.



Additional Features

Full-Body Air Massage Coverage

Foot Rollers

Total-Body Heat

Wall Hugging

Chromotherapy

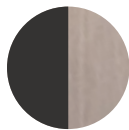
Remote Control Featuring 10 Languages

Link Massage

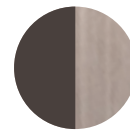




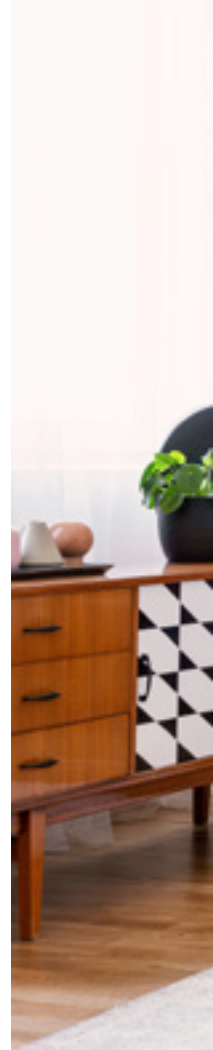
Available Colors



Jet Upholstery
Silvered Maple Trim



Mocha Upholstery
Silvered Maple Trim





Technical Specifications and Dimensions

Model Name R.6

Power Supply AC120V ~ 60Hz

Power Consumption 200 W

Preset Sessions 12 sessions

Manual Sessions 7 sessions plus Foot Rollers

Average Massage Session Length 18 minutes

Track Type L-Track

Reclining Angle Approximately 123° to 157°

Wall Hug 5" needed between back and wall when upright

Seat Width 20" (50 cm)

Seat Depth 18.5" (47 cm)

Chair Weight 304 lbs (139 kg)

Gross Boxed Weight 375 lbs (170 kg)

Upholstery Synthetic Leather

Maximum User Weight 265 lbs (120 kg)

Recommended User Height 5' 0" (152 cm) to 6' 5" (196 cm)

Designer Ken Okuyama

Massage Choreography Akira Okabayashi sensei

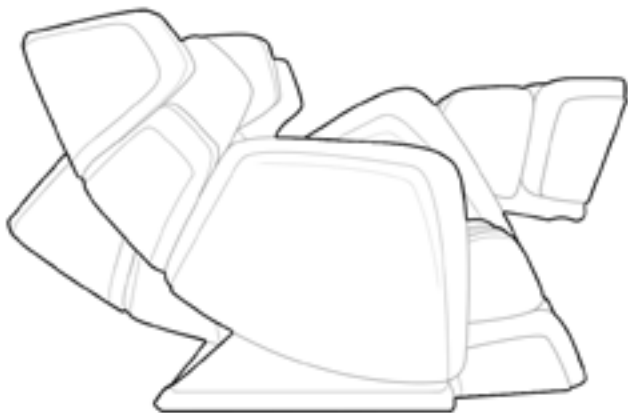
Warranty 3-year Limited; extendable to 5-year Limited



33" (84 cm)
Width

47" (119 cm)
Upright

38.25" (97 cm)
Reclined



62.5" (159 cm)
Upright

73.75" (187 cm)
Reclined



OHCO. A division of FFL Brands.

© 2020 FFL Brands

www.OHCOmassage.com